

HOLLYWOOD & VINE WALLSCAPE

6253 HOLLYWOOD BLVD, LOS ANGELES, CA | VIEWABLE AREA: 80'H x 60'W

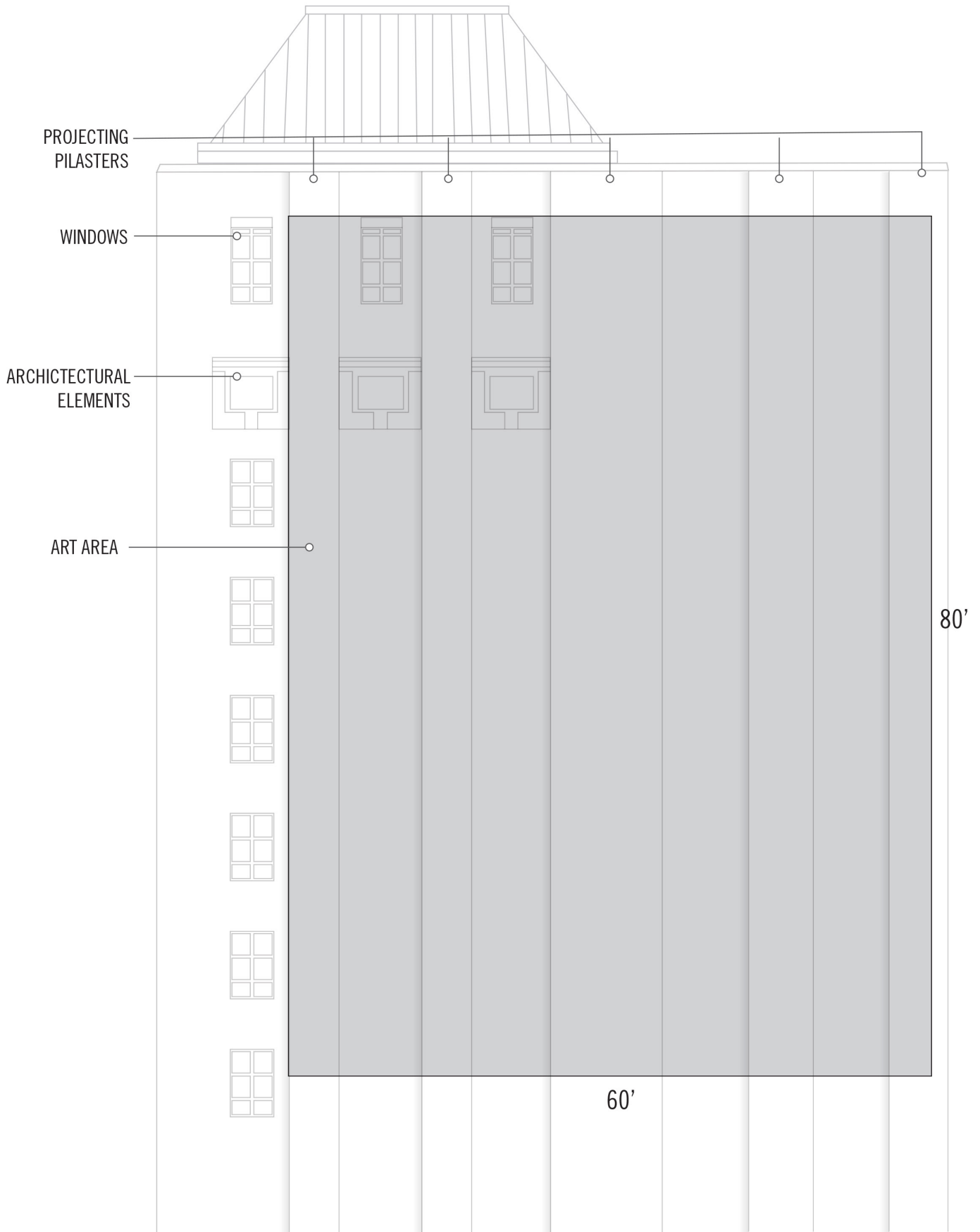


View Size (Live Area):	80'H x 60'W
Bleed:	None
Material:	NA - The wallscape is hand painted
Art:	1/8" = 1' PDF with resolution between 600-1200 dpi Please send art to programming@brandedcities.com and acmemuralsla@gmail.com (via yousendit, dropbox, hightail, FTP, ect)
Hard Proofs:	Three (3) hard color proofs are required at 1/2" = 1'-0" scale Please send color proofs to: ACME Murals 11255 Malat Way Culver City, CA 90230 (310) 469-4912
Finishing:	NA
Timing:	Art must be received minimum of three (3) weeks prior to posting. Hand painted posting work requires one week to complete.
Other:	Please note, hard takedowns cannot be accommodated on this wall without a copy change. If a hard takedown is required, please discuss this with your account executive at the time of contracting.

PLEASE NOTE: When designing art for this wall, please note the existing 3D architectural elements and pilasters as located on pg. 2 of this spec sheet. Please keep important images and text away from the architectural elements in the upper left quadrant, as these features are prominent.

Click to download template here: [PHOTOSHOP](#)

Deliverable files for HV2002 can be uploaded to our Sharefile here: <https://brandedcities.sharefile.com/r-rd78c52e06b746b29>
For questions, please contact: **SAM TOPOREK** | 602.224.3113 | stoporek@brandedcities.com



Click to download template here: **PHOTOSHOP**

Deliverable files for HV2002 can be uploaded to our Sharefile here: <https://brandedcities.sharefile.com/r-rd78c52e06b746b29>
 For questions, please contact: **SAM TOPOREK** | 602.224.3113 | stoporek@brandedcities.com