

UNIT LA1001

Market:	Los Angeles
Location:	Mondrian Hotel, 8440 Sunset Blvd. West Hollywood, CA
Panel Number:	LA1001
View Size (Live Area):	102'-10" H x 61'-8" W (Varies - See Individual Sizes Below)
Bleed:	Print To Edge
Wall Material:	Flexcon RTS Adhesive Vinyl
Panel 1:	102'-10" H x 26'-8" W -plus 2" Bleed On All Sides (print to edge)
Panel 2:	7'-2" H x 4'-0" W -plus 2" Bleed On All Sides (print to edge)
Panel 3:	72'-9" H x 31'-0" W
Window Material:	Please Refer To Details On The Following Pages
Panel 4, Windows:	Flexcon See Thru Sign 60/40 7 Windows, 6'-7" H x 16'-0" W each Please Refer TO Window Panel Details On The Following Pages
Software:	InDesign, Photoshop or Illustrator
OS:	Macintosh
File Mode:	CMYK
File Format:	TIFF, PDF, JPG
Storage Media:	CD-ROM / DVD-ROM
Scaling	1/2 INCH = 1 FOOT: 600 DPI 1/4 INCH = 1 FOOT : 1200 DPI
Miscellaneous:	<ol style="list-style-type: none"> 1) Text cannot exceed 750 square feet (15% of sign area) 2) All vinyl material shall be noncombustible or shall have a flame spread index of not greater than 25 when tested in accordance with ASTM E 84 or UL 723. 3) All materials shall comply with City of West Hollywood CBC 705.12 4) Vinyl manufacturer shall stamp material with the original date of manufacturing. 5) Please provide a layout of the image for installation. 6) Please provide art for permitting three weeks prior to posting. 7) Materials are due one week prior to posting. 8) Please provide match print with crop marks.
Approved Printers:	<p>BP Graphics- 3940 W. Montecito Ave. Phoenix, AZ 85019 Contact: Curt Carpenter (602) 272-6078</p> <p>Midnight Oil- 3800 Venowen St. Burbank, CA 91505 Contact: David Updegraph (818) 295-6078</p>
Installation Contractor:	Hang Time Installers- 6413 Alondra Blvd. Paramount, CA 90723 Contact: (562) 817-5629
Scheduling:	<p>Allow one week from receipt of art for City of West Hollywood design review and permitting.</p> <p>Revisions to creative after permits are issued are subject to re-filing fees.</p> <p>Vinyl must be delivered to the installer 2 business days prior to posting.</p> <p>Installation may take up to five days from posting date to complete. Posting work on this property is allowed on weekdays only.</p> <p>Questions About The Finishing Specifications: Sam Toporek - Branded Cities Network (602) 224-3113 stoporek@brandedcities.com</p>

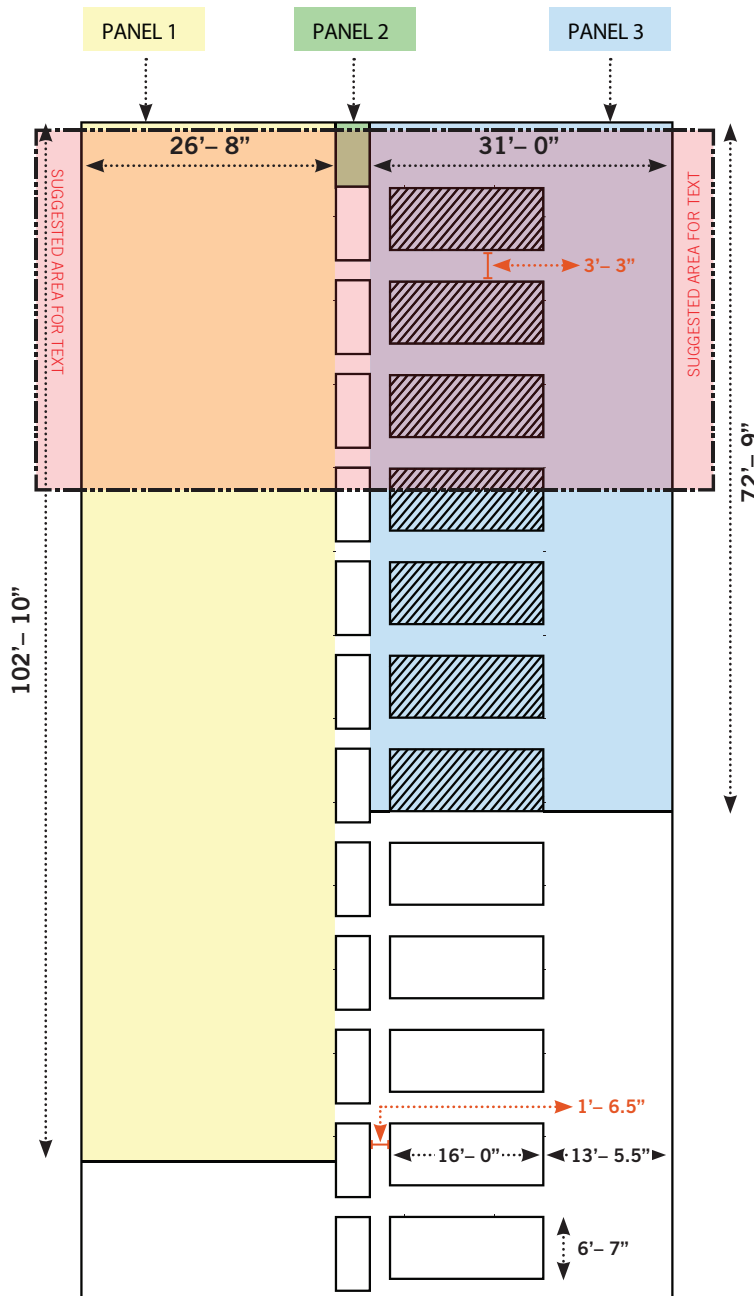
#1001

STATIC

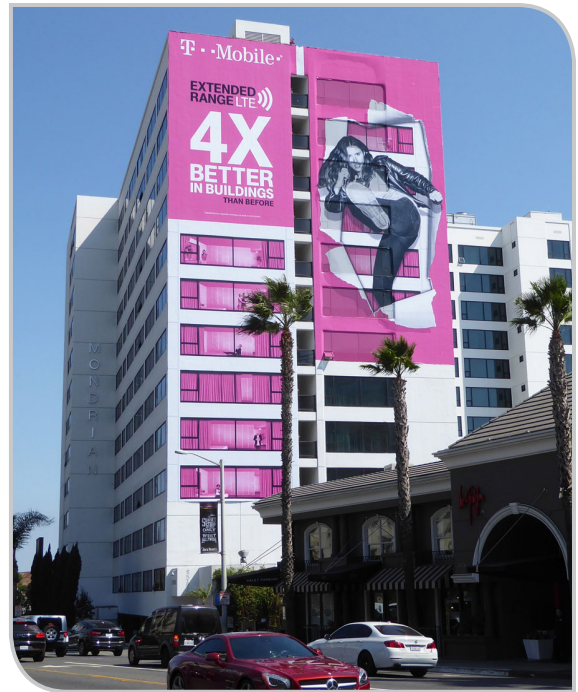
MONDRIAN WALLSCAPE

8440 SUNSET BLVD. | WEST HOLLYWOOD
LOS ANGELES | CALIFORNIA

SIZE: 104' x 61' (See Spec Sheet) | FACING: WEST
DEC: 40.4 | EOI: 275.3 | LAT: 34.09452 | LONG: -118.37470



* ALL CREATIVE MUST BE APPROVED BY BRANDED CITIES BEFORE IT GOES INTO PRODUCTION.



AREA SUMMARY

- PANEL 1:** 102'-10" x 26'-8"
- PANEL 2:** 7'-2" x 4'-0"
- PANEL 3:** 72'-9" x 31'-0"
- PANEL 4: (7 WINDOWS):** 6'-7" x 16'-0" ea.

- Cut panels in 20' lengths max. height as follows:
 - 2" overlap on right side of each panel
 - 2" rain lap at bottom of each panel
 - Mark visible at bottom w/ registration marks

Deliverable files can be uploaded to our Sharefile here: <https://brandedcities.sharefile.com/r/r80dd27bbd014fc6a>

For questions, please contact SAM TOPOREK | 602.224.3113 | stoporek@brandedcities.com

BRANDED CITIES.COM

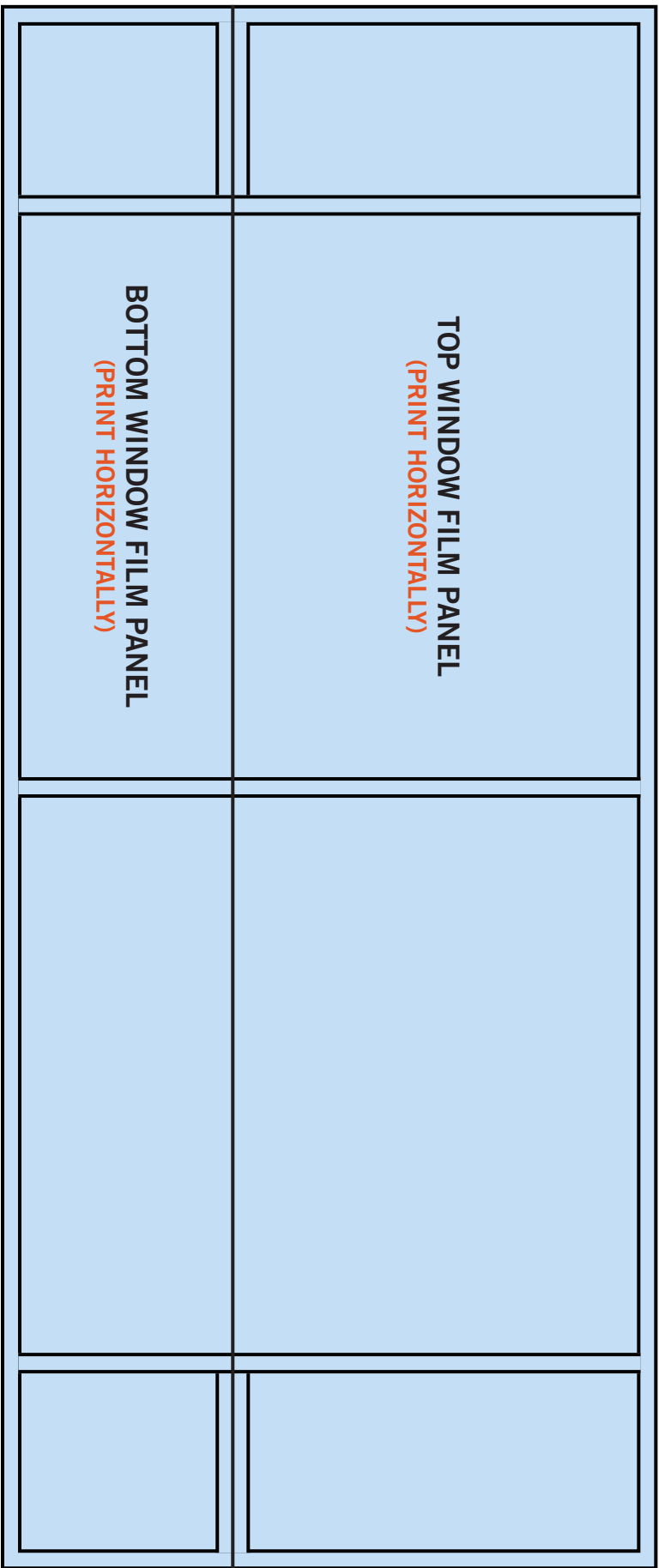
2850 E. CAMELBACK ROAD, PHOENIX, ARIZONA 85016 | 855.224.2400

BRANDED
CITIES
NETWORK™

MONDRIAN WALLSCAPE

WINDOW PANEL DETAIL

***NOTE:** Materials will overlap at window frame and "center cut" overlap. 12" added for adjustment.



26"

55.5"

TOTAL HEIGHT: 6'- 9.5" + 12" (Blow Up) = 7'- 9.5" or 93.5"

TOTAL WIDTH: 16'- 0" + 12" (Blow Up) = 17'- 0" or 204"