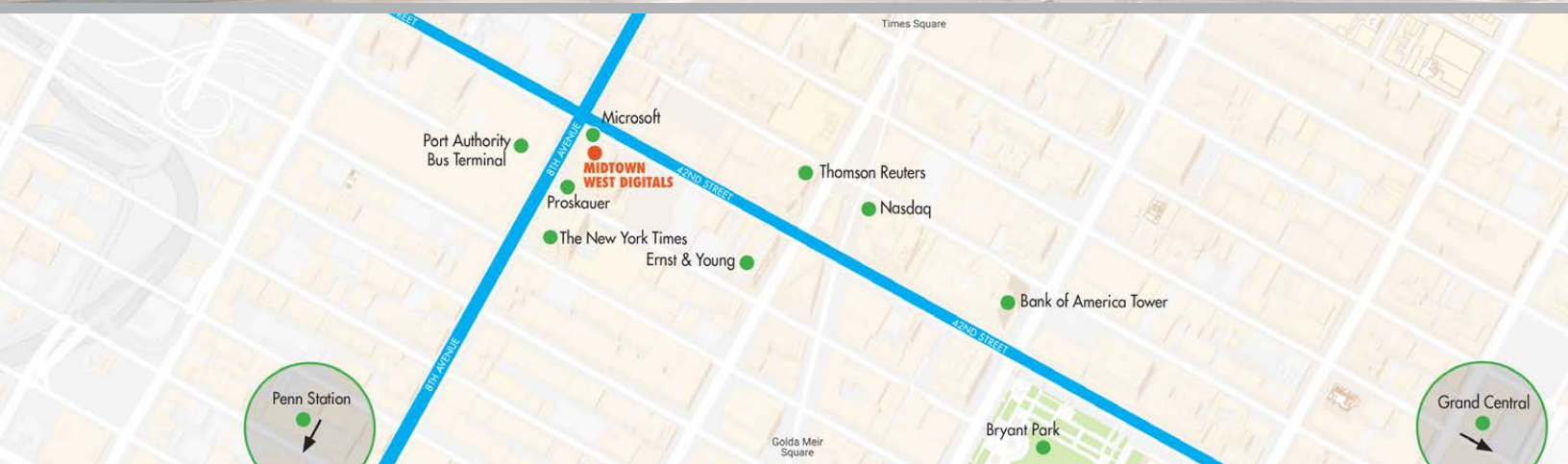


MIDTOWN WEST DIGITALS

NEW YORK



DESTINATION DESCRIPTION

Located at the busy intersection of 42nd Street and 8th Avenue in midtown Manhattan, the Midtown West Digital ads comprise a two-screen network, each angled to oncoming traffic, maximizing viewability and impressions. Positioned directly across from the Port Authority Terminal, the Midtown West Digital ads will be at the start and end point of over 225,000 commuters' daily travels into and out of Manhattan.

Points of interest and businesses in the immediate area include the New York Times Building, Ernst & Young, Nasdaq, Thomson Reuters, the Bank of America Building, and Bryant Park. Additionally, the Midtown West Digital ads are capable of targeting key retail along the 42nd Street Commuter Corridor, which links Grand Central Terminal to the Port Authority Terminal.

MIDTOWN WEST DIGITALS

NEW YORK



GEOPATH ID: TBD

ESTIMATED SIZE: 20'H x 60'W (w/ 8FT. RETURN)

DIGITAL: YES

FACING: PRIMARY SCREEN: N&E; RETURN: W

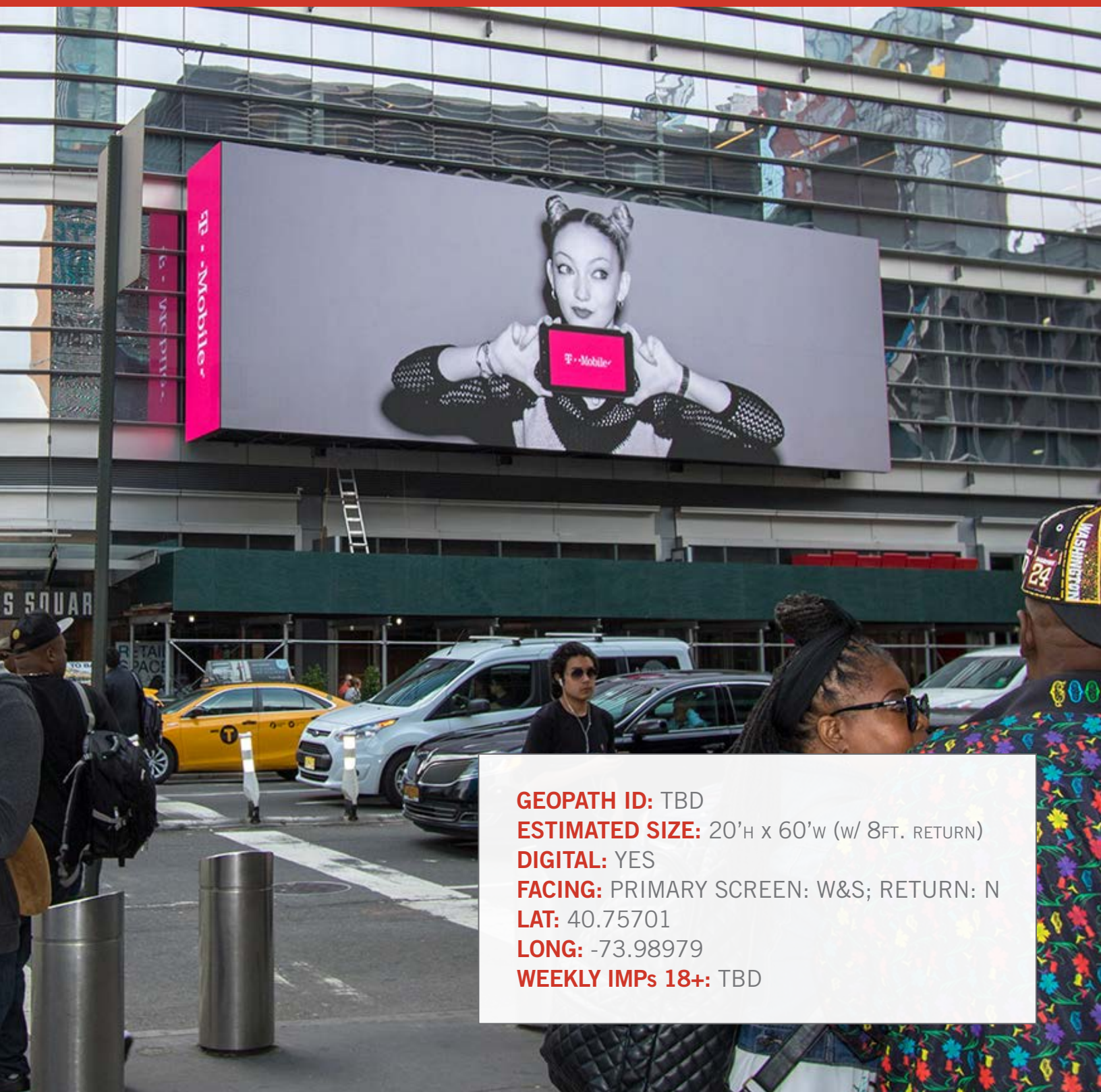
LAT: 40.75706

LONG: -73.98967

WEEKLY IMPs 18+: TBD

MIDTOWN WEST DIGITALS

NEW YORK



GEOPATH ID: TBD
ESTIMATED SIZE: 20'H x 60'W (w/ 8FT. RETURN)
DIGITAL: YES
FACING: PRIMARY SCREEN: W&S; RETURN: N
LAT: 40.75701
LONG: -73.98979
WEEKLY IMPs 18+: TBD