

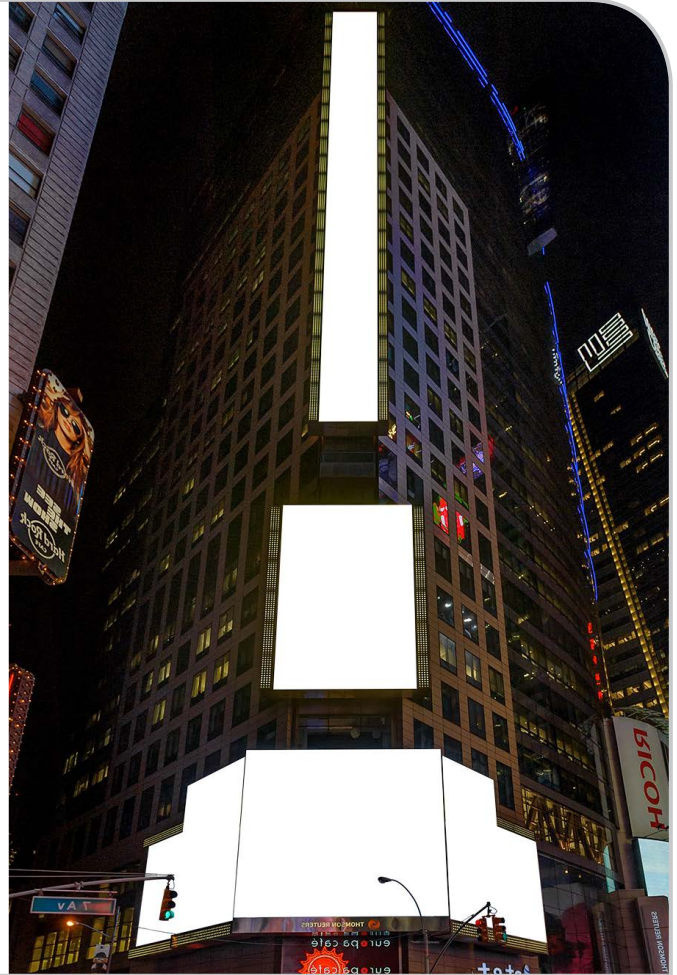
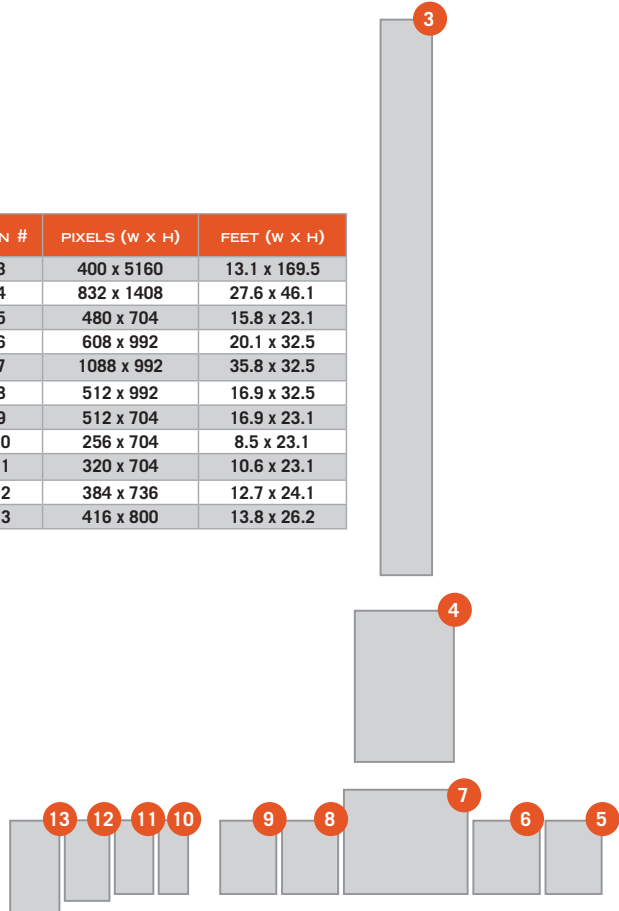
THOMSON REUTERS

DIGITAL

SPEC SHEET

VIEWABLE/LIVE AREA: 7,691 SQ. FT.

SIGN #	PIXELS (W X H)	FEET (W X H)
3	400 x 5160	13.1 x 169.5
4	832 x 1408	27.6 x 46.1
5	480 x 704	15.8 x 23.1
6	608 x 992	20.1 x 32.5
7	1088 x 992	35.8 x 32.5
8	512 x 992	16.9 x 32.5
9	512 x 704	16.9 x 23.1
10	256 x 704	8.5 x 23.1
11	320 x 704	10.6 x 23.1
12	384 x 736	12.7 x 24.1
13	416 x 800	13.8 x 26.2



STATIC CONTENT

Please use the provided Photoshop or Illustrator template for layout of all static artwork

- Final hi-res format: .jpg
- All rendered artwork: (1.0) px @ 72 dpi
- Color mode: RGB

MOTION GRAPHIC CONTENT

Please refer to the After Effects template and Tutorial PDF for detailed information regarding creation and delivery of motion graphics on this display.

Click to download templates here : [PHOTOSHOP](#) | [ILLUSTRATOR](#) | [AFTER EFFECTS + TUTORIAL](#)

Deliverable files can be uploaded to our Sharefile here <https://brandedcities.sharefile.com/r/r439be7ba7204f4cb>

For questions, please contact: 646.223.8000 | creativeteam@brandedcities.com

BRANDED CITIES .COM

2850 E. CAMELBACK ROAD, PHOENIX, ARIZONA 85016 | 855.224.2400

BRANDED
CITIES
NETWORK™