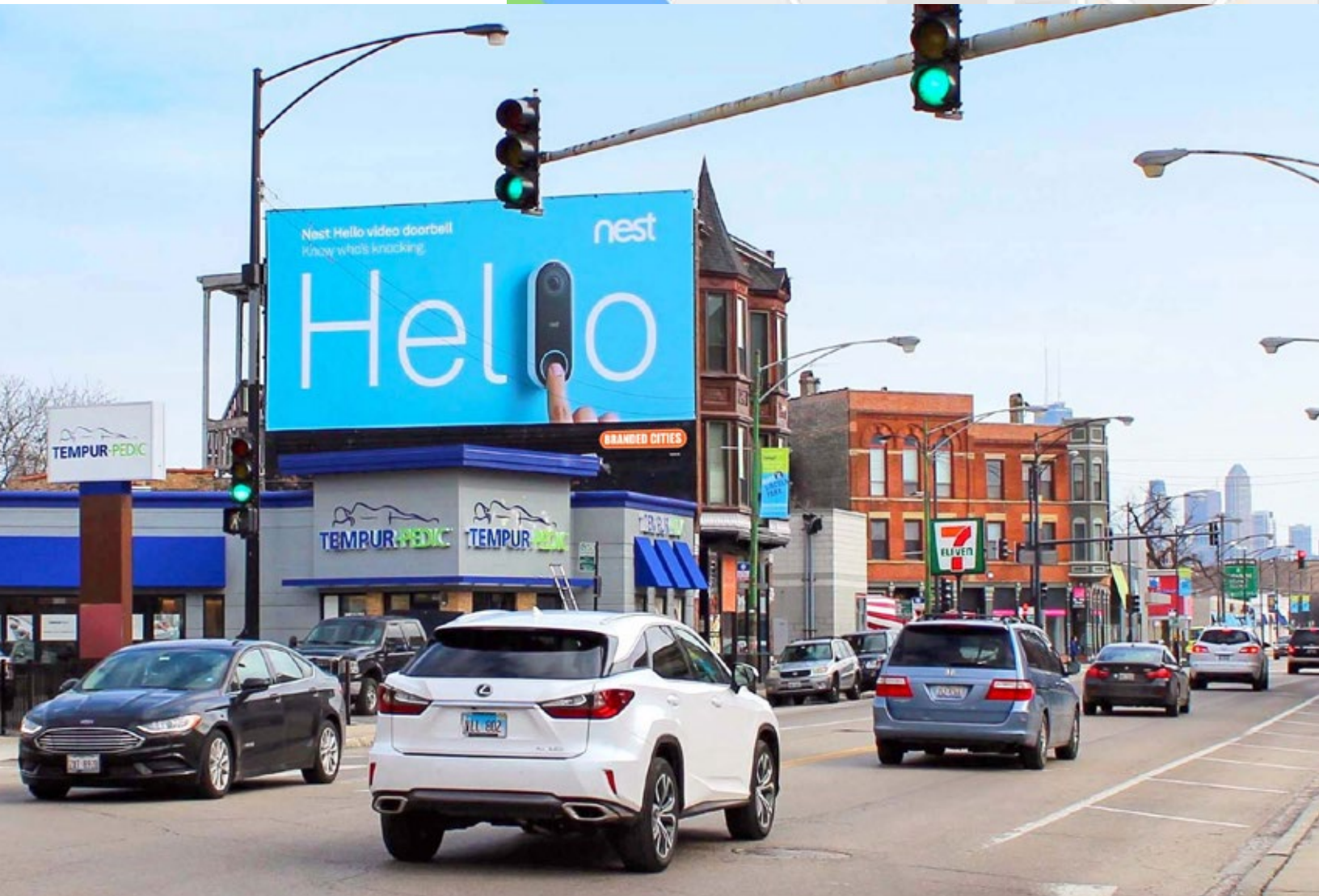


2187

CHICAGO, IL.

LINCOLN PARK / CLYBOURN SHOPPING CORRIDOR

BC UNIT ID: CHI 2187
LOCATION: CLYBOURN AVE & WEBSTER AVE
GEOPATH ID: 30711038
SIZES: 20' H x 40' W
FORMAT: VINYL WALLSCAPE, ILLUMINATED
FACING: NW
LAT: 41.92131
LONG: -87.663654



DESTINATION DESCRIPTION

Located in the highly desirable Lincoln Park area, surrounded by retailers such as Apple, J.Crew, Banana Republic, Gap, Anthropologie, Pottery Barn and Whole Foods to name a few, this highly visible unit sits directly across the street from the largest movie theatre on the north side, the Regal Cinemas 11 at Webster Place.

Past Clients Include: Red Bull, Gap, Nordstrom, Virgin Mobile, Fiat, Target, Pepsi, The North Face, Naked Juice, Absolut