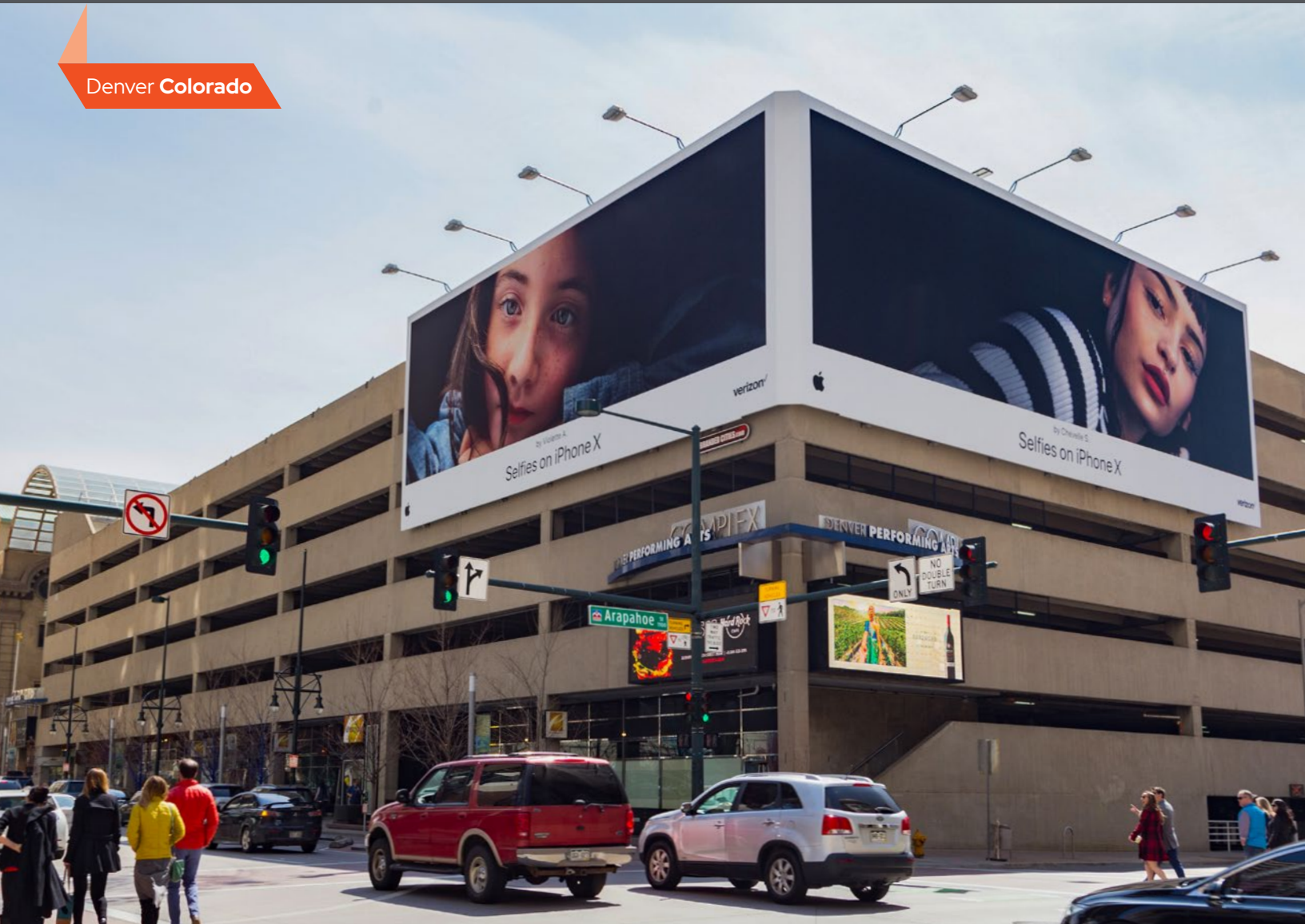
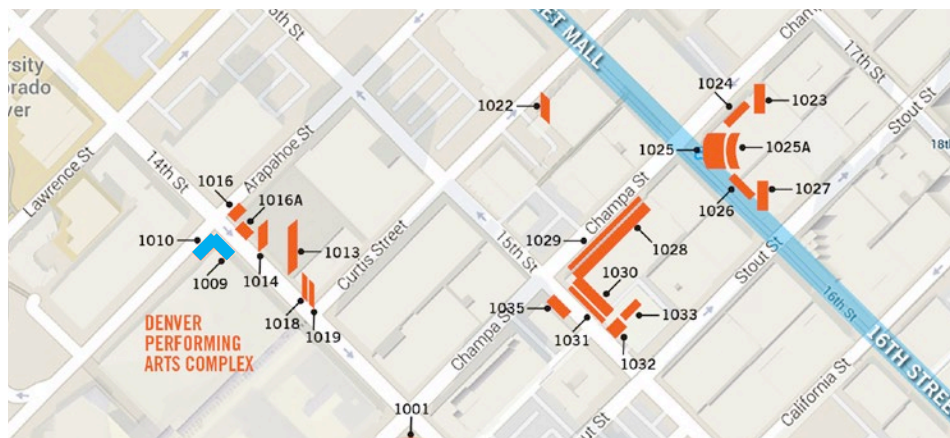


Denver Colorado



BC UNIT ID: DTD 1009-1010  
 LOCATION: 14th St & Arapahoe St  
 GEOPATH IDS: 1009: 30496020  
 1010: 30496021  
 SIZE: 30' H X 162.5' W  
 FORMAT: Static, Illuminated  
 FACING: North  
 LAT: 39.745953  
 LONG: -104.997985



#### DESTINATION DESCRIPTION

Positioned on the Denver Performing Arts Complex parking garage, this wide wallscape corner wrap is ideally located within the Downtown Theater District. The unit faces two sets of 3 lane traffic on 14th St. and Arapahoe St. leading towards the theaters, Convention Center, downtown hotels and the University of Colorado.

Please Note: City of Denver requires approval of all ad copy. Approvals may take up to five days.