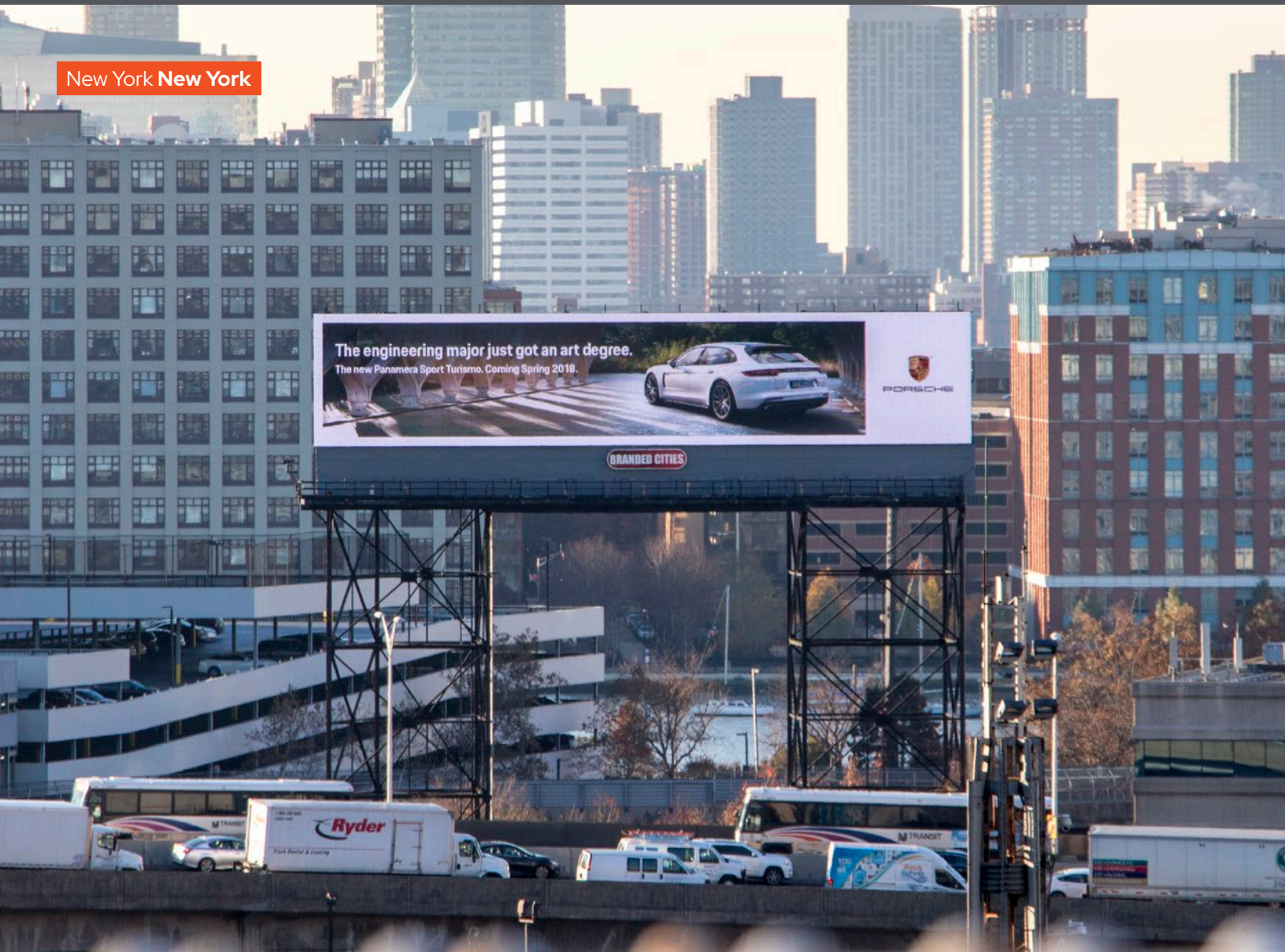


New York New York



BC UNIT ID: LT1001

LOCATION: I-495 Connecting NY to NJ

GEOPATH ID: 30711015

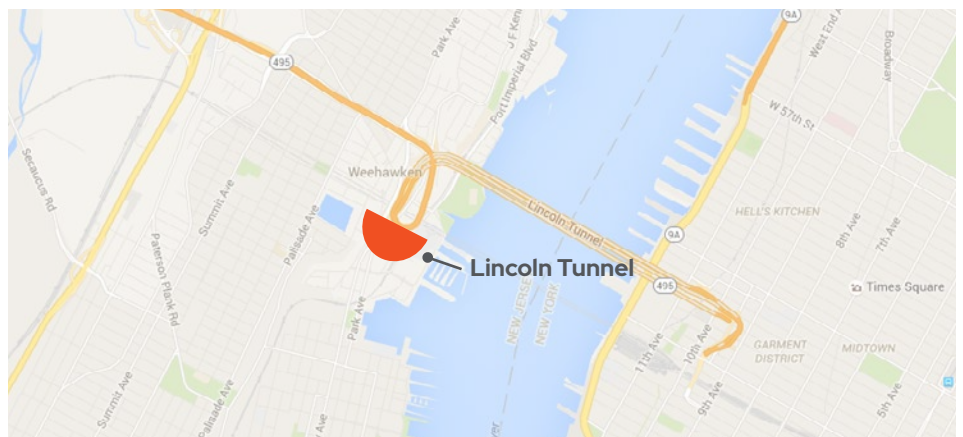
SIZE: 20' h x 100' w

FORMAT: Digital, Illuminated

FACING: North

LAT: 40.762432

LONG: -74.024024

[Lincoln Tunnel Spec Sheet](#)


DESTINATION DESCRIPTION

The Lincoln Tunnel, located in the #1 DMA in the United States, is the busiest vehicle tunnel in the nation. This Branded Cities' digital display is centered at the most visible point of the inbound and outbound helix, making it one of the highest rated digital boards on a per spot basis in the entire United States. The Lincoln Tunnel is the most significant connection to Manhattan from major New Jersey roadways including I-95, I-495, I-80, Route 3 and Route 17. It is also the major access point to Midtown Manhattan from Newark International Airport, the New Jersey Meadowlands and MetLife Stadium (home of the NFL New York Giants and Jets).