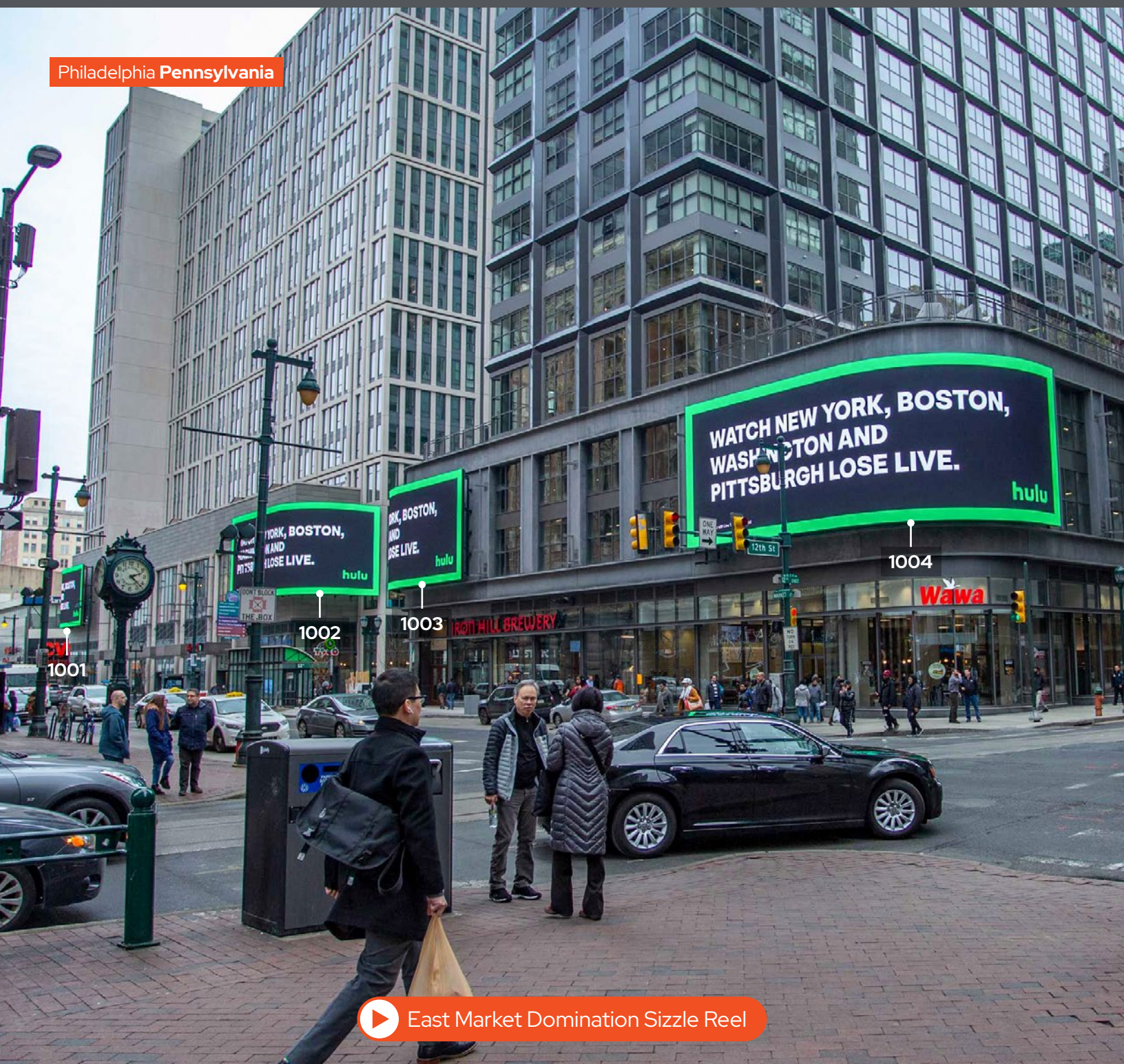


Philadelphia Pennsylvania

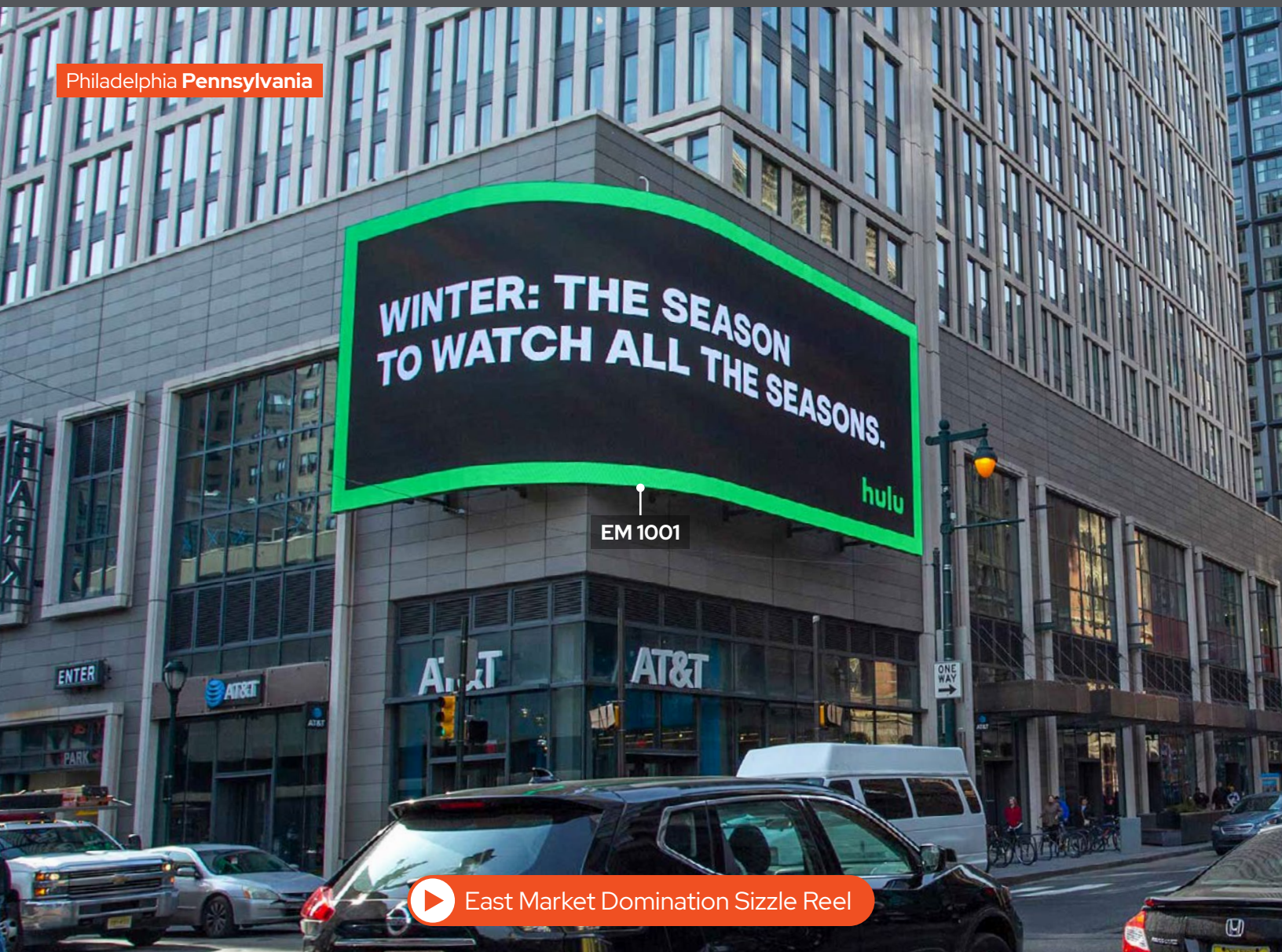


East Market Domination Sizzle Reel

Located on heavily trafficked Market Street, between 12th Street & 11th Street, the East Market Domination represents a new high impact digital opportunity in Center City, Philadelphia. Positioned just one story above street level, each of the four (4) curved LED displays will be capable of targeting a vast mix of business professionals, millennials and tourists, providing hundreds of thousands of weekly pedestrian and vehicular impressions.



Philadelphia Pennsylvania



EM 1001



East Market Domination Sizzle Reel

BC UNIT ID: EM 1001

LOCATION: Market St & 11th St
East Podium

GEOPATH ID: 30814820

SIZE: 21' 9" H X 60' 1" W

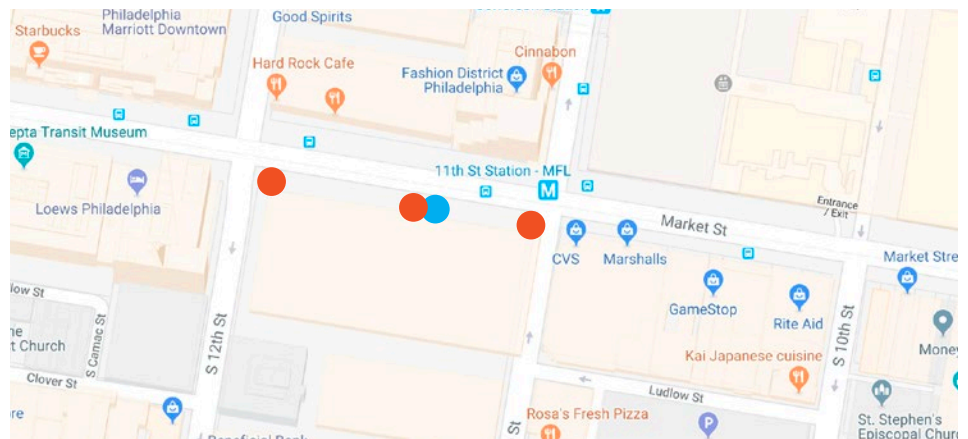
FORMAT: Digital

FACING: Northeast

LAT: 39.951585

LONG: -75.15841

East Market Domination Spec Sheet



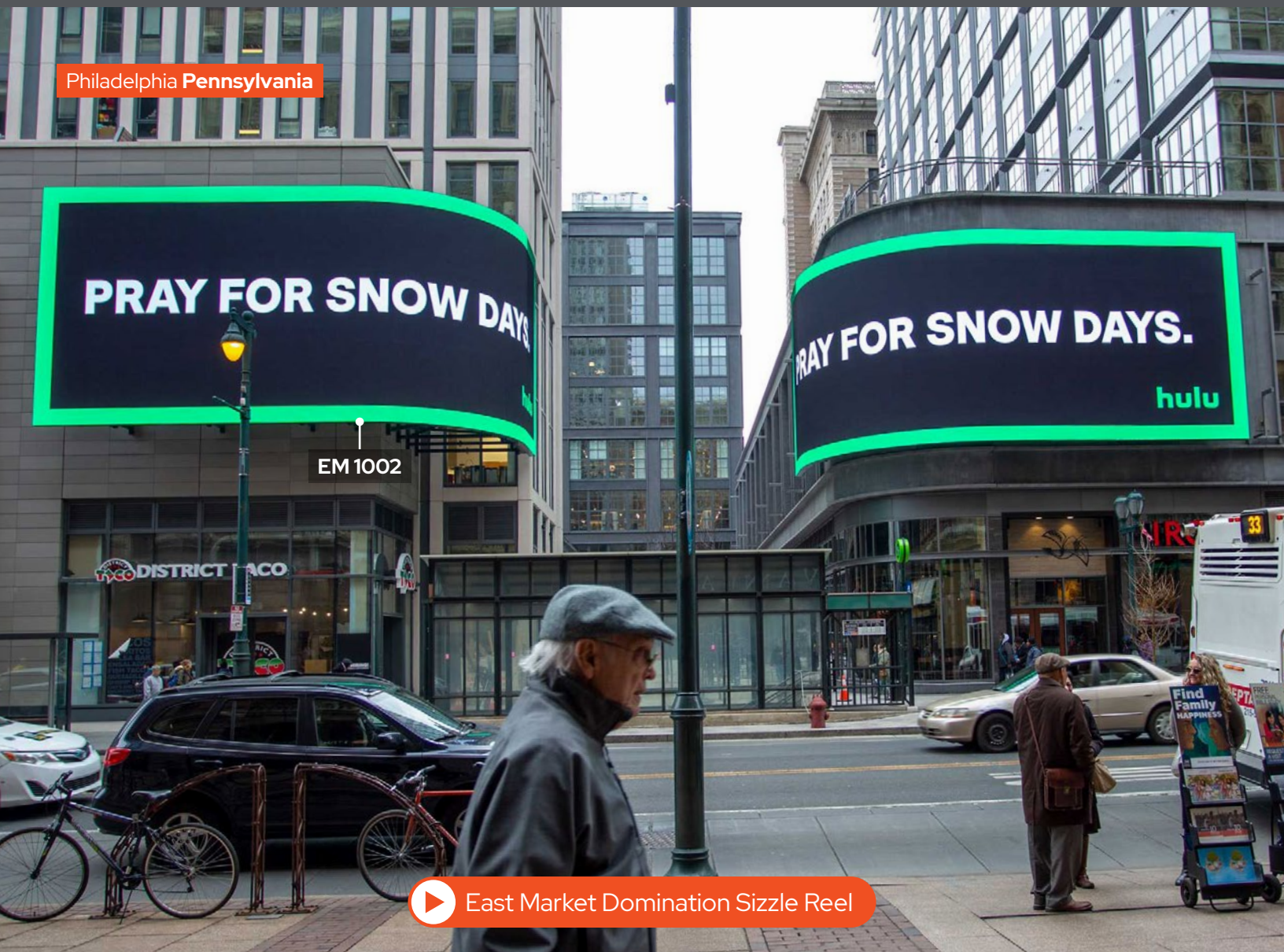
DESTINATION DESCRIPTION

Center City, Philadelphia. Positioned just one story above street level, each curved LED display will be capable of targeting a mix of business professionals, millennials and tourists, providing hundreds of thousands of weekly pedestrian and vehicular impressions.

Points of interest in the immediate area include Philadelphia's City Hall, the Pennsylvania Convention Center, Reading Terminal Market, Jefferson Station and famous landmarks; the Liberty Bell and Independence Hall.

Hours of Operation: 20 Hours/Day

Philadelphia Pennsylvania



East Market Domination Sizzle Reel

BC UNIT ID: EM 1002

LOCATION: Market St & 11th St
East Podium

GEOPATH ID: 30814821

SIZE: 21' 9" H X 56' 5" W

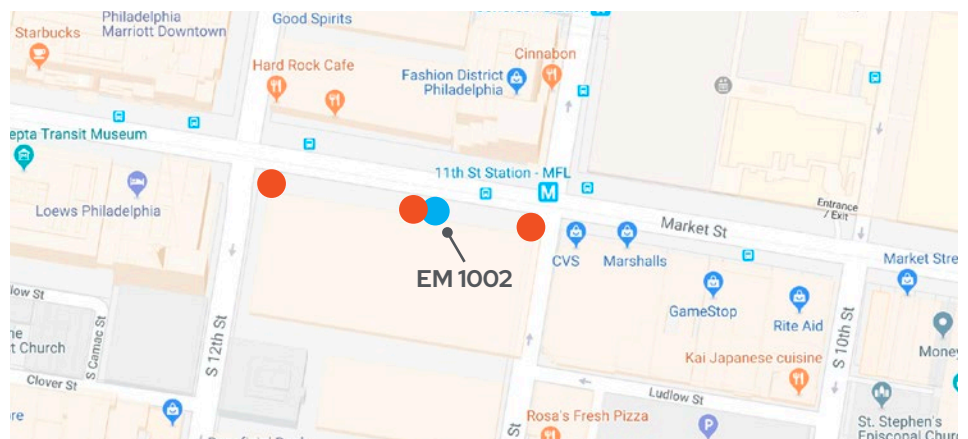
FORMAT: Digital

FACING: Northeast

LAT: 39.951647

LONG: -75.15891

East Market Domination Spec Sheet



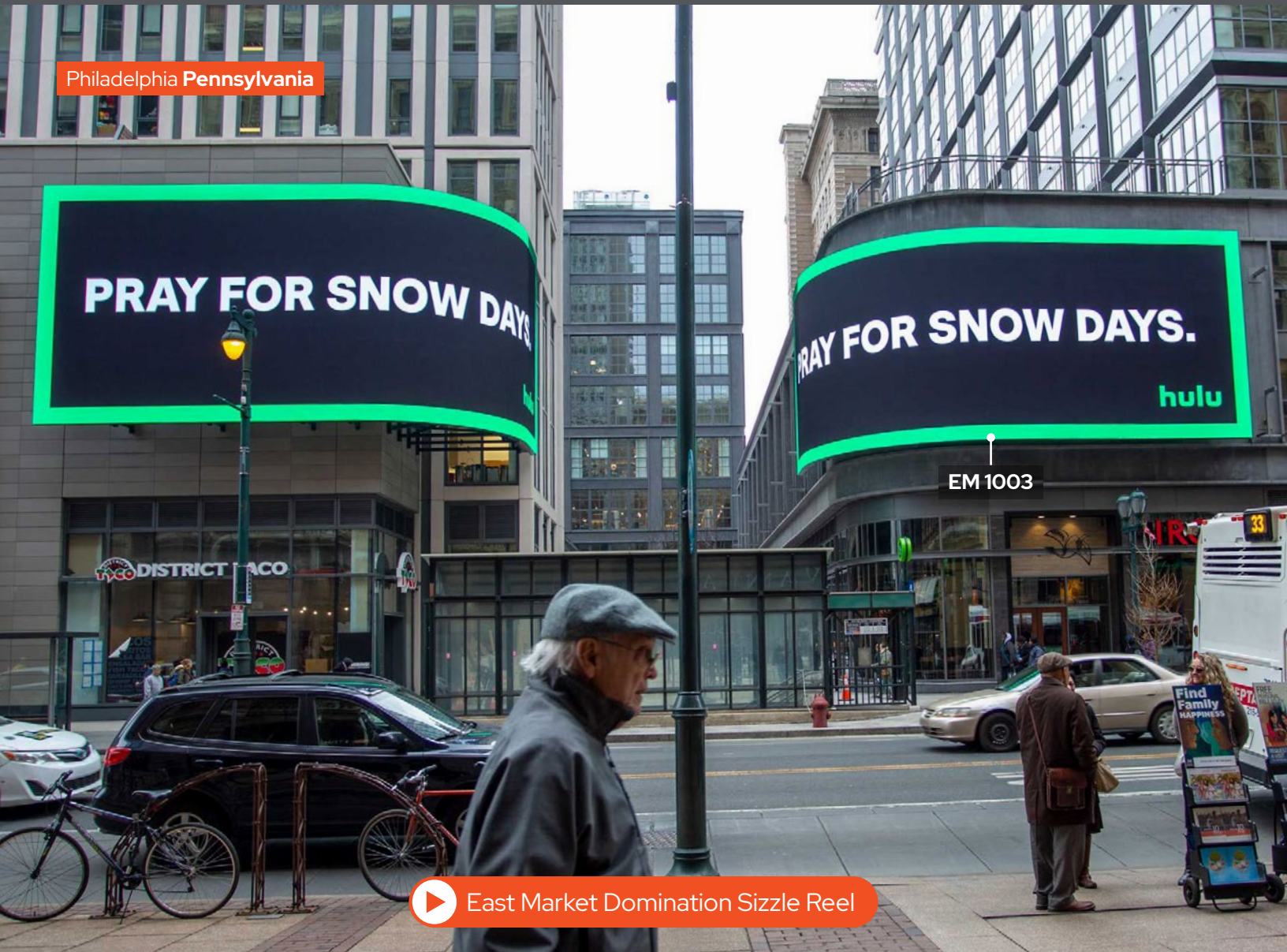
DESTINATION DESCRIPTION

Center City, Philadelphia. Positioned just one story above street level, each curved LED display will be capable of targeting a mix of business professionals, millennials and tourists, providing hundreds of thousands of weekly pedestrian and vehicular impressions.

Points of interest in the immediate area include Philadelphia's City Hall, the Pennsylvania Convention Center, Reading Terminal Market, Jefferson Station and famous landmarks; the Liberty Bell and Independence Hall.

Hours of Operation: 20 Hours/Day

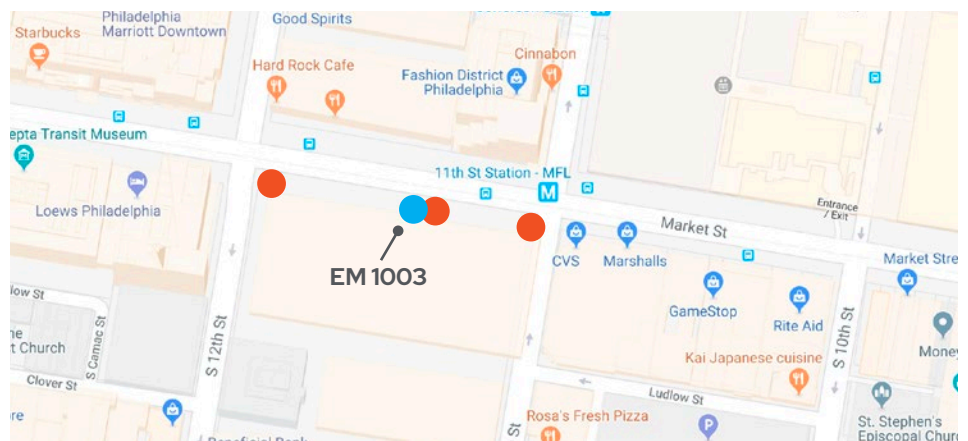
Philadelphia Pennsylvania



East Market Domination Sizzle Reel

BC UNIT ID: EM 1003
 LOCATION: Market St & 12th St
 West Podium
 GEOPATH ID: 30814822
 SIZE: 21' 9" H X 56' 5" W
 FORMAT: Digital
 FACING: Northeast
 LAT: 39.951654
 LONG: -75.15901

East Market Domination Spec Sheet



DESTINATION DESCRIPTION

Center City, Philadelphia. Positioned just one story above street level, each curved LED display will be capable of targeting a mix of business professionals, millennials and tourists, providing hundreds of thousands of weekly pedestrian and vehicular impressions.

Points of interest in the immediate area include Philadelphia's City Hall, the Pennsylvania Convention Center, Reading Terminal Market, Jefferson Station and famous landmarks; the Liberty Bell and Independence Hall.

Hours of Operation: 20 Hours/Day

Philadelphia Pennsylvania



▶ East Market Domination Sizzle Reel

BC UNIT ID: EM 1004

LOCATION: Market St & 12th St
West Podium

GEOPATH ID: 30814823

SIZE: 21' 9" H X 60' 1" W

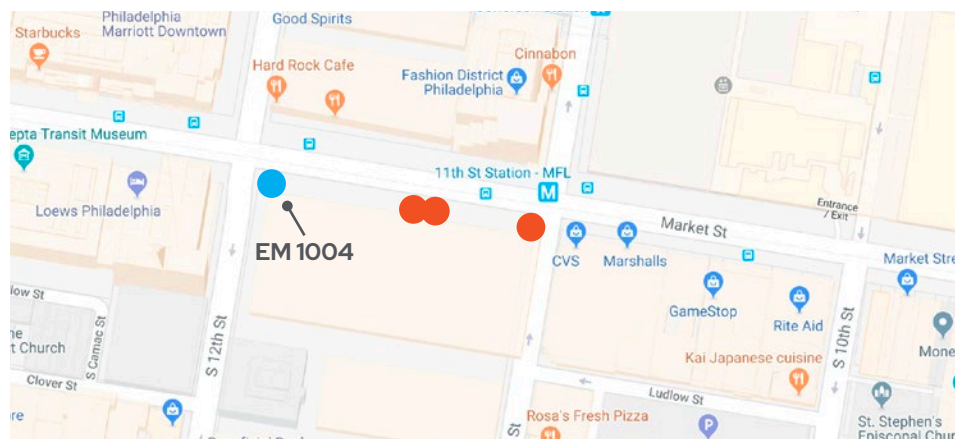
FORMAT: Digital

FACING: Northeast

LAT: 39.951749

LONG: -75.15974

East Market Domination Spec Sheet



DESTINATION DESCRIPTION

Center City, Philadelphia. Positioned just one story above street level, each curved LED display will be capable of targeting a mix of business professionals, millennials and tourists, providing hundreds of thousands of weekly pedestrian and vehicular impressions.

Points of interest in the immediate area include Philadelphia's City Hall, the Pennsylvania Convention Center, Reading Terminal Market, Jefferson Station and famous landmarks; the Liberty Bell and Independence Hall.

Hours of Operation: 20 Hours/Day