

405 A/B

BRANDED CITIES

LOS ANGELES, CA.

HUNTINGTON BEACH

BC UNIT ID: 405 DIGITALS

LOCATION: I-405 N/O BEACH BLVD

GEOPATH IDs: **405A (North Face):** 30650074

405B (South Face): 30650075

SIZES: **405A:** 29.5' H x 33' W

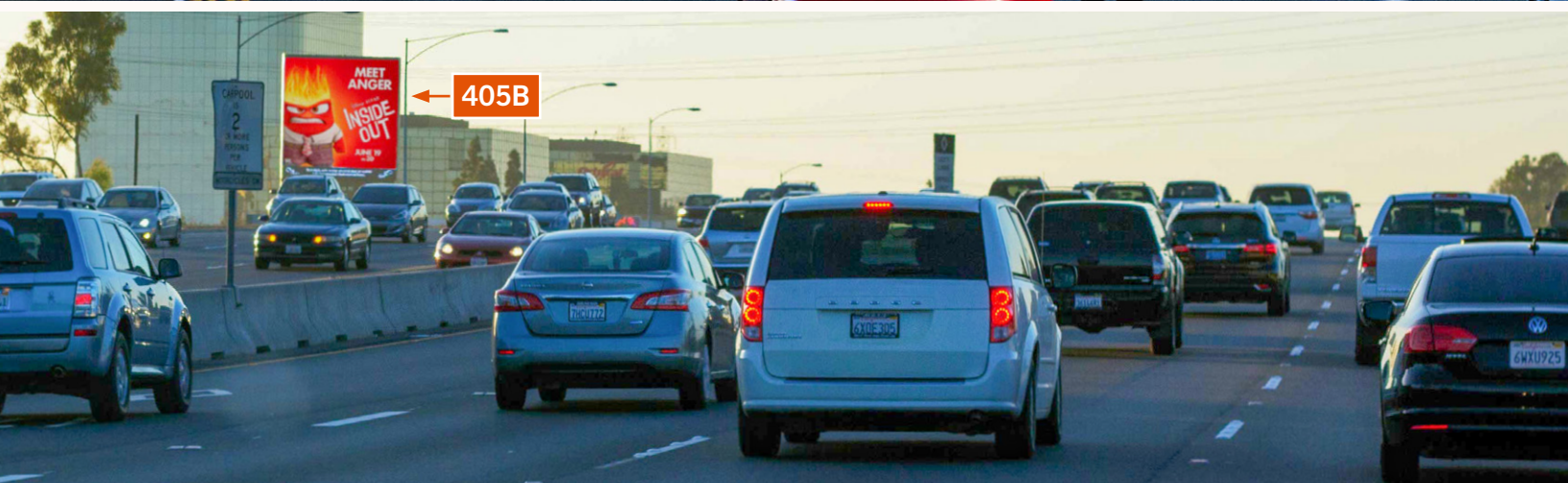
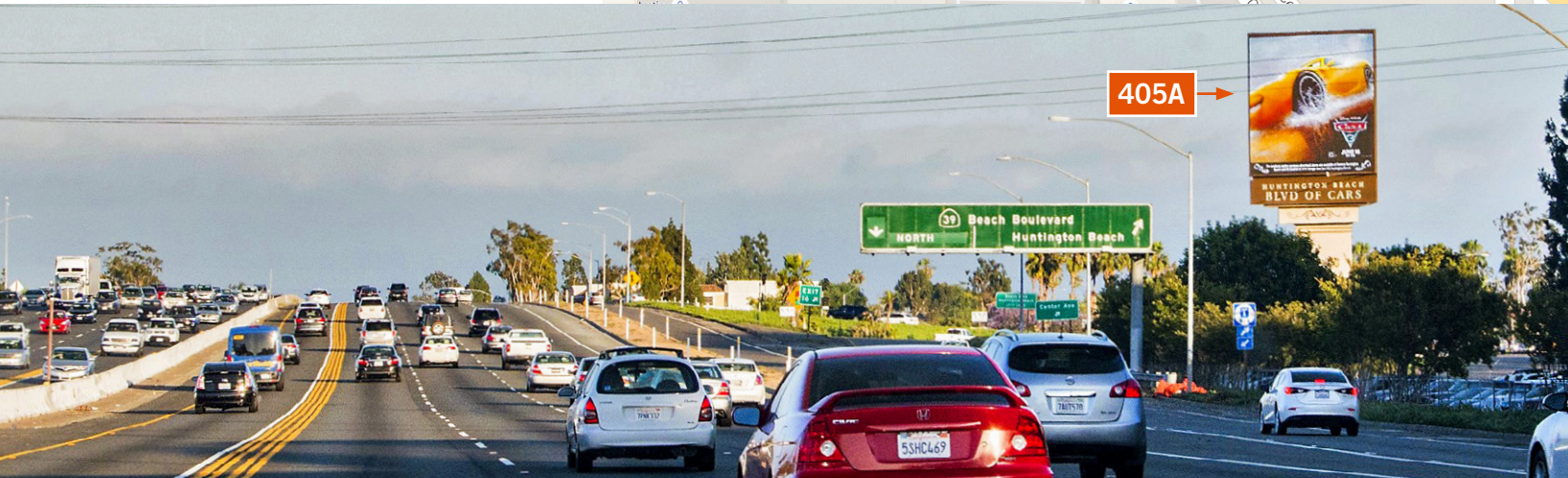
405B: 29.5' H x 33' W

FORMAT: DIGITAL

FACING: N, S

LAT: 33.733343

LONG: -117.991622



DESTINATION DESCRIPTION

These digital spectaculars are located on I-405, the main north/south artery for all of Southern CA and the busiest most congested freeway in the United States. Travelers targeted by the southbound unit will be headed towards coastal and inland communities such as Seal Beach, Huntington Beach, Costa Mesa, Newport and many other affluent Orange County areas. Wheres travelers targeted by the northbound unit will be headed towards some of the most famous and affluent communities such as Santa Monica, Venice, Marina del Rey, Brentwood, Hollywood and Beverly Hills. **Hours of Operation: 19 Hours/Day**

Please Note: These displays are in partnership with the local Economic Development Zone and the advertisements are subject to certain parameters and guidelines and need prior approval to run. Your Branded Cities representative will provide all details and approvals.