

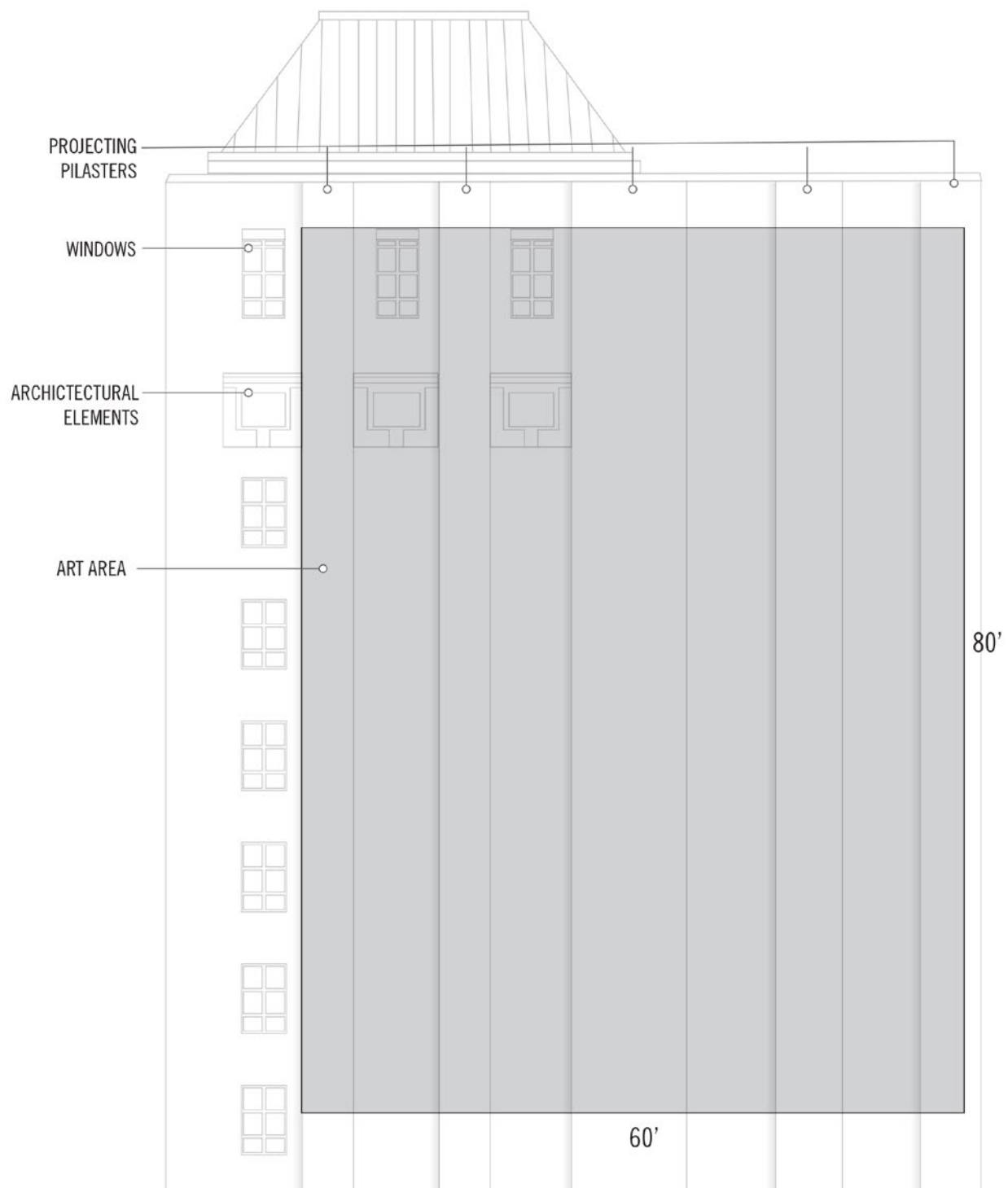
8/10/2018

- MARKET:** Los Angeles
LOCATION: 6253 Hollywood Blvd | Hollywood & Vine
PANEL NUMBER: HV2002
- SIZE:** Live/Visible: 80' H x 60' W
Bleed: None
- MATERIAL:** This wallscape is hand painted
- FILE FORMAT:**
– 1/8 Inch = 1 Foot
– .pdf file accepted (minimum 600 dpi)
- COLOR MODE:** CMYK
- GENERAL INFO:**
– Hand painted posting work requires one (1) week to complete
– Hard takedowns cannot be accommodated on this wall without a copy change.
If a hard takedown is required, please discuss this with your account executive at the time of contracting.
- HARD PROOFS:**
– Three (3) hard color proofs are required for 1/2" = 1'-0" scale
– For any artwork containing facial elements, please provide an 8x10 hi-res image of this detail.
– Please send color proofs to:
ACME WORLD WIDE HQ
3858 Olympiad Dr.
View Park, CA. 90043
(310) 469-4912
- FILE DELIVERY:** Please send art via Hightail, WeTransfer, ShareFile, Dropbox or FTP to the following:
programming@brandedcities.com AND acmemuralsla@gmail.com
- IMPORTANT INFO:** When designing art for this wall, please note the existing 3D architectural elements and pilasters as shown in the diagram on page 2 of this spec sheet. Please keep important images and text away from the architectural elements in the upper left quadrant, as these features are prominent.

NOTE: Art must be received minimum 3 weeks prior to posting.

HV2002

PRODUCTION CONTACT: programming@brandedcities.com



NOTE: Art must be received minimum 3 weeks prior to posting.

HV2002

PRODUCTION CONTACT: programming@brandedcities.com